

4330

- Embedded network scanning for best signal.
- Multi-tower targeting.
- Software defined filtering for precise channelization.
- Only cell signal amplifier with wideband and channelized mode.
- Extended dynamic range technology (XDR).
- Remote cloud monitoring of health and performance of system.
- Expandable with 140i, 710i, 1398 and WilsonPro Zinwave DAS.

140i

- FirstNet AT&T amplifier.
- Compatible with 4G/LTE/5G-NR signals.

710i

- Band 71.
- Low frequency band.
- Frequency Division Duplex (FDD) LTE spectrum.

1398

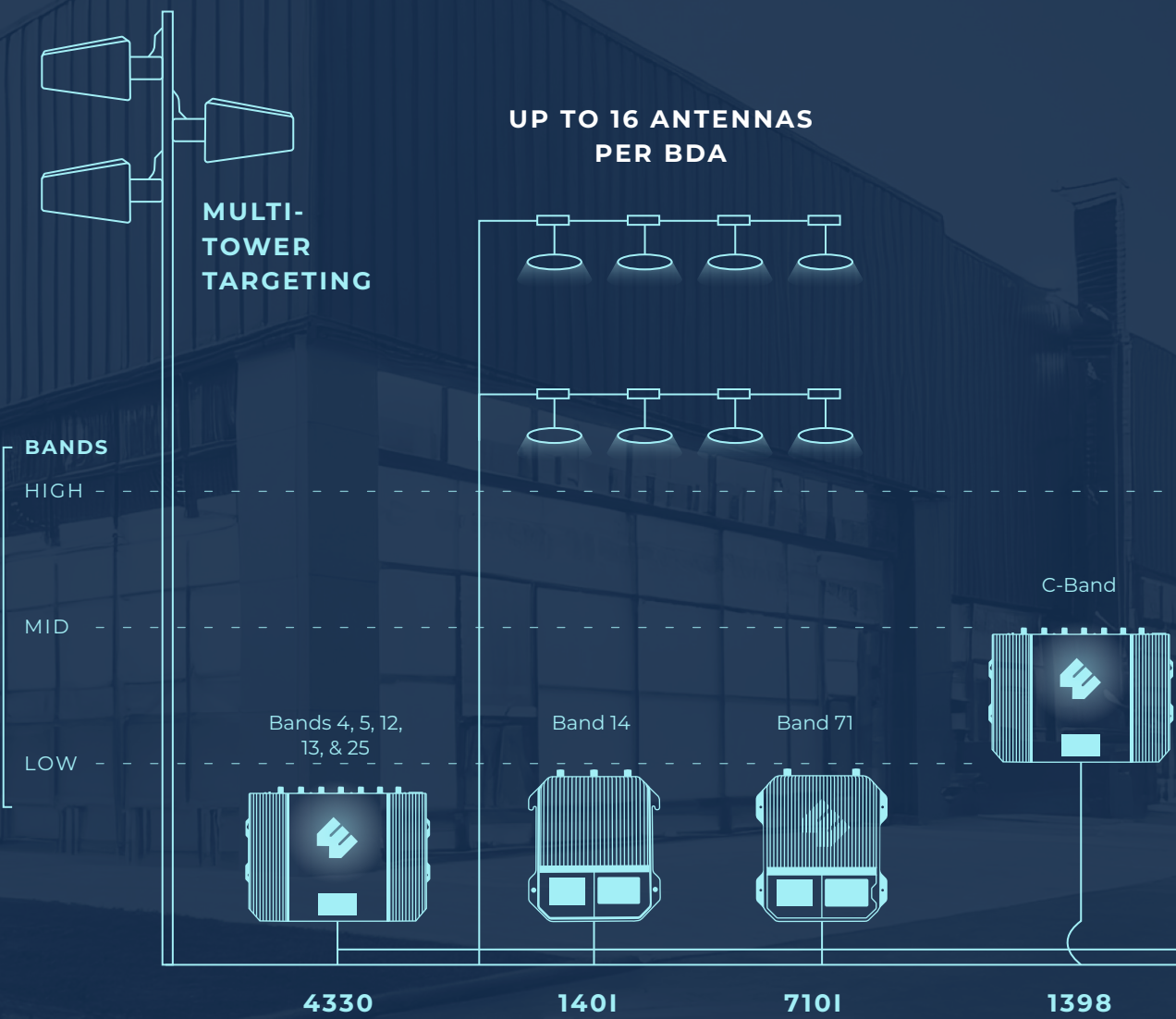
- C-band delivery.
- Time Division Duplexing (TDD) path automatic synchronization.
- Full network and anti-oscillation protection.
- Dual tower or MIMO amplification.
- Expandable with 4330 and WilsonPro Zinwave 8000.

ACTIVE DAS

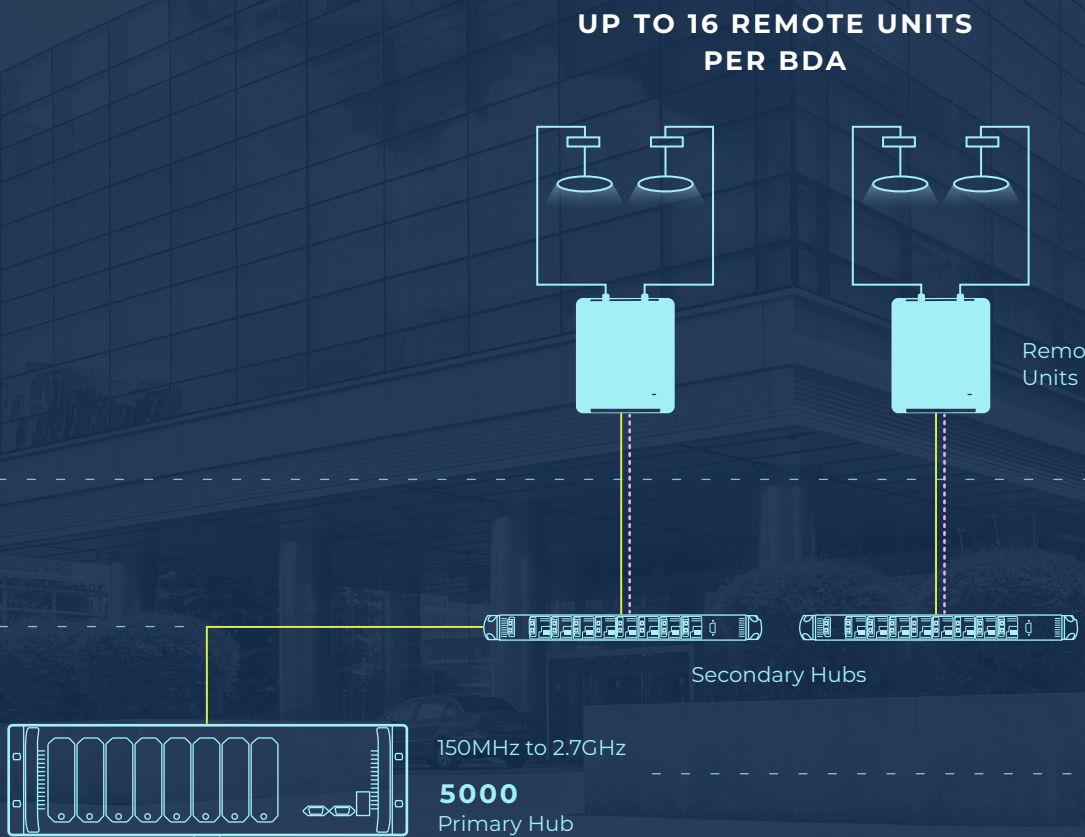
- Ultimate in coverage and capacity
- Creation of signal through direct source: base station, small cell, femtocell, private network.
- Paired spectrum FDD or TDD modulation.
- Discrete TX/RX path for maximum bandwidth.
- Secure analog fiber for intrusion resistance and greater coverage.
- 5 components standardized across geographies and networks.
- Monitoring and alerting system that tracks DAS health and performance
- 5000: Connects to 4330, 140i, 710i.
- 5000: 150 MHz to 2.7GHz
- 8000: Connects to 4330, 140i, 710i, 1398 or any public safety BDA.
- 8000: 150 MHz to 5GHz

PASSIVE DAS

COAX
FIBER
FIBER + POWER



HYBRID DAS



ACTIVE DAS

