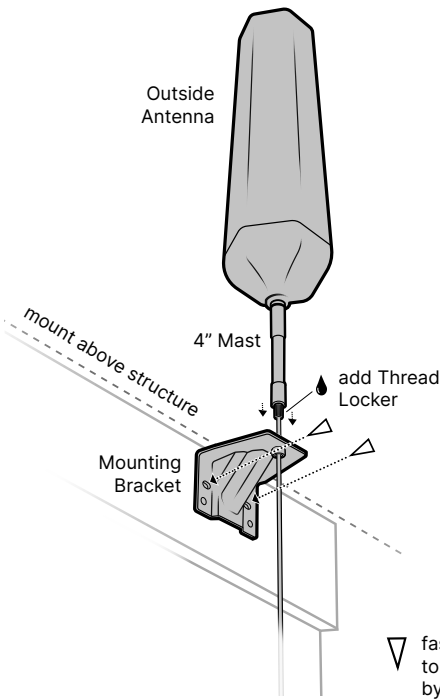


Hex 360

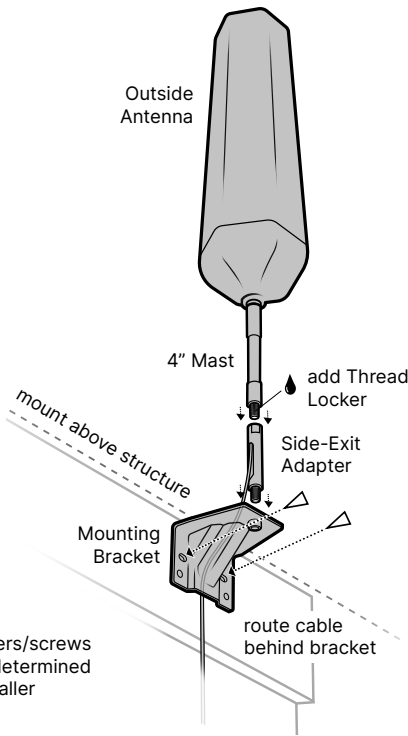
High Gain Omni-Directional Antenna

we:boost

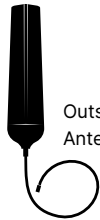
Mounting without Side-Exit Adapter



Mounting with Side-Exit Adapter



Package Contents



Outside Antenna



Mounting Bracket & Hardware



4" Mast & Thread Locker



Side-Exit Adapter

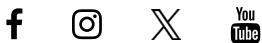
MOUNTING THE HEX 360

The mounting bracket can be directly secured to the exterior fascia of the structure. For best performance, the Hex 360 outside antenna should be mounted above the horizontal plane of the structure and vertically. Mounting the Hex 360 horizontally or at an angle will




degrade performance. The side-exit adapter can be used to route the cable behind the bracket, if needed.

NOTE: Additional fasteners/screws to be determined by installer and material of structure.

we:boost



1444 E Ventura Drive, St. George, UT

 1-866-294-1660  www.weboost.com  support.weboost.com

Copyright © 2025 weBoost. All rights reserved.
weBoost products covered by U.S. patent(s) and pending application(s)
For patents go to: weboost.com/us/patents